

Eyres Monsell Gains National Space Award!

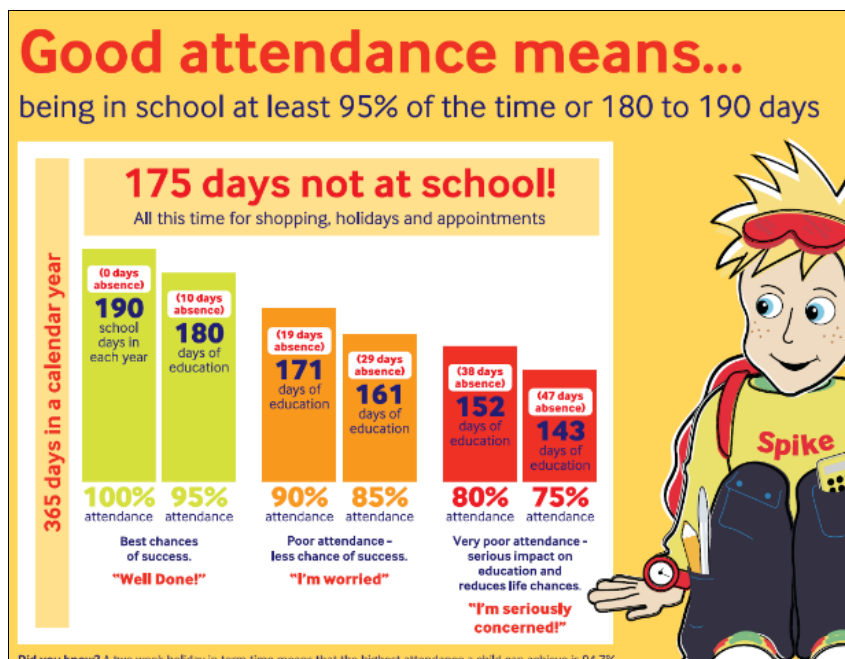
Huge congratulations to Miss Reilly, staff and pupils for all of their hard work, learning about space. The school recently applied for a national award and were thrilled to have been awarded the **Space Education Quality Mark Silver Award**. The award is given by the Science and Technology Council and is great recognition of everyone's hard work. Well done!



Attendance

Every minute, of every hour, of every day counts!

We have noticed a large number of children who have already had several days of absence or are repeatedly late to school. Prompt attendance plays a large part in children's education. We would ask parents to try to ensure children attend school on time, every day.



Did you know? A two week holiday in term time means that the highest attendance a child can achieve is 94.7%



Christmas Craft Afternoon

Don't forget to come along to our family Christmas Craft afternoon, this Friday 2nd December 1.15pm. Please make sure you have returned the slip so we know who will be coming in to school.

Children will be making crafts to help decorate their classes and their class Christmas tree, ready for our school tree competition. Come along and join in this festive activity.

Other points to note

Breakfast club

Please can we remind parents that breakfast club does not start until 8am. Please try to avoid bringing children before this time, as the staff are not available to supervise the children.

Christmas Dinner

Due to Year 6 having a trip to Leicester university, the Christmas Dinner will now be Thursday 15th December not Wednesday 14th.

Early Pick Ups

Please can we respectfully request that where possible, appointments are made outside of school hours. We have seen increased numbers of parents requesting to collect early from school, for non medical reasons. Early collections will only be authorised for medical reasons or other exceptional circumstances. Please contact the office, before the day of the early pick up, as at times there is only one member of staff in the office, so late notice can be difficult to arrange. Thank-you.

Lastly, if you are early bringing or collecting your children, please can we ask that parents wait on the playgrounds, rather than in the main reception. The main reception area is used at all times and as such needs to be clear for pupils, staff and the office to continue working and moving around the school during the day. Where there are large numbers of parents waiting, before school has finished, the noise and limited space can be difficult to manage before the end of the school day.

Thank-you for your understanding.